

WHITEHEAD INDUSTRY 4.0

THE MODERN EDUCATION IS **HYLOMORPHICALLY-INSPIRED**. THAT MEANS OUR EDUCATION SYSTEM WILL ALWAYS LAG BEHIND THE TECHNOLOGICAL DEVELOPMENTS, WHICH EVOLVE ON THEIR OWN PACE NOT UNDER OUR STRICT CONTROL. TO COMBAT THIS GAP WE SHALL EMPLOY **WHITEHEAD'S PROCESS PHILOSOPHY** FOR **INDUSTRY 4.0** SECTOR, AND SPECIFICALLY USE **UNIFIED NAMESPACE** CONCEPTS TO CREATE THE **PROCESS LAKE** IN A SO-CALLED SPECIAL BIOTECH ZONE

AUTHORS

Marsel Khaliullin

ACKNOWLEDGMENTS

Alexander Vetushinsky
Roman Deev

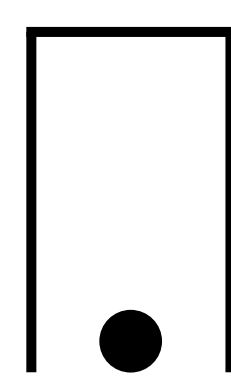
INTRODUCTION

INSTRUCTIONAL DESIGN TO CREATE WORKFORCE IS NOT REACHING THE PACE OF TECHNOLOGICAL DEVELOPMENTS IN BIOTECH.

INSTEAD OF BEING **HYLOMORPHIC**, OUR INSTRUCTIONAL DESIGN SHALL GET THE LAST **PROCESS TRUTH** FROM THE FACILITY ITSELF.

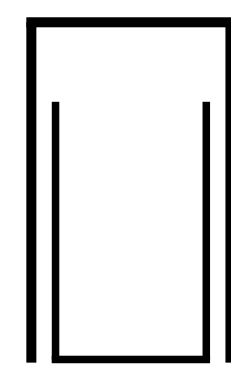
THIS IS DONE BY CREATING A **PROCESS LAKE** WHICH GIVES PROCESS MATERIAL FOR THE INDEPENDENT INSTRUCTIONAL DESIGN

We can craft a quick yet elegant classification of conceptual instructional desing



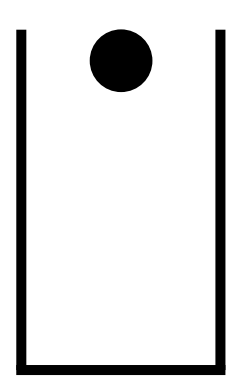
Morphism

Prioritize form over matter, echoing early divine revelation paradigms



Hylomorphism

Hylomorphic scheme takes matter into account and creates a synergy between them



Hylism

Hylism prioritizes matter over form and posits that the matter can self-organize

Our educational approaches can also be characterized using this paradigm



Old morpic paradigms of teaching were closely related to the realm of ideas and religion

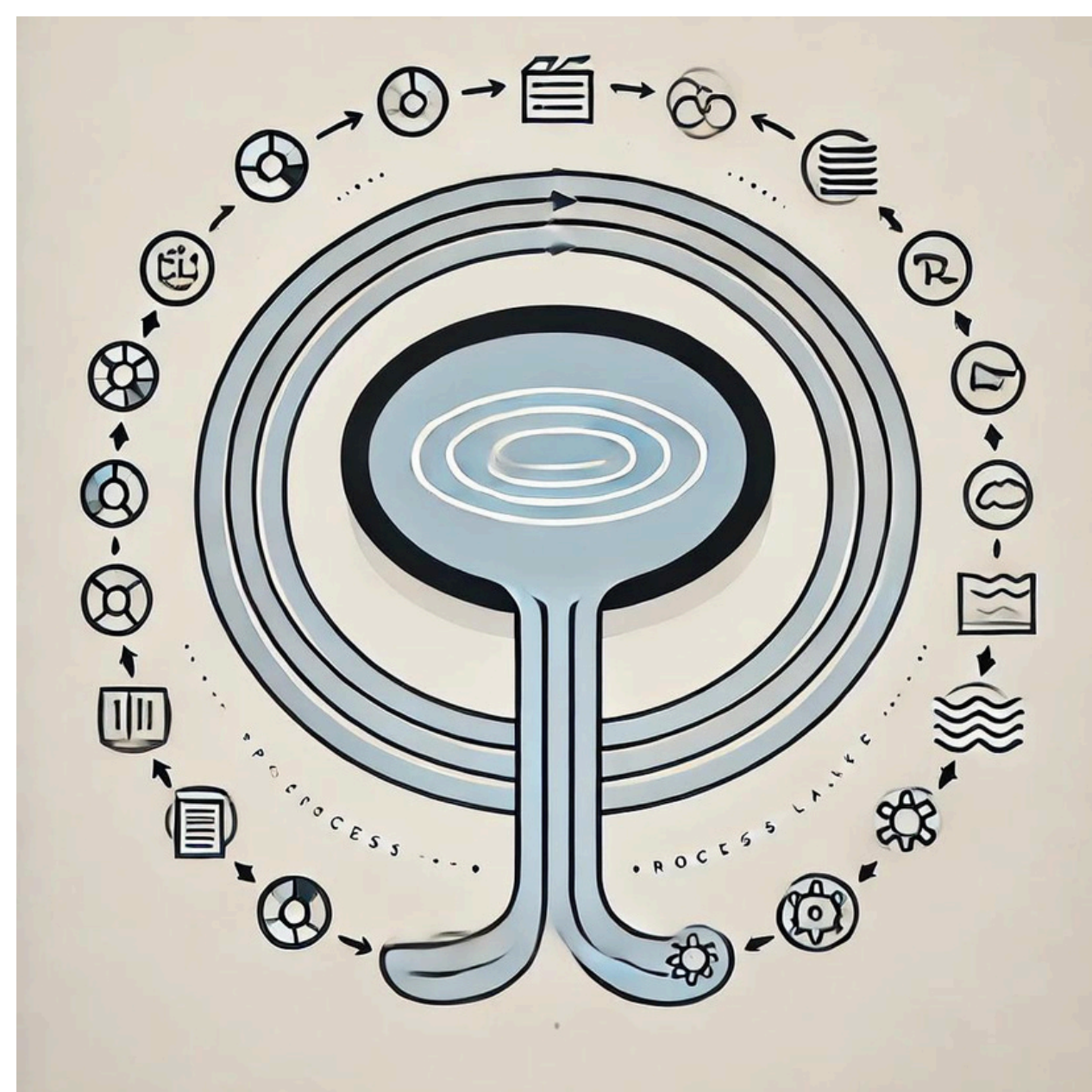


Modernistic thought has grinded these foundations into the approach where students also matter and are taken into account



The swarm learning is more pertinent to contemporary production made at manufacturing facilities

[Image CAPTION] Canva repository



Process Lake is a special entity within SBZ which collects all the executable processes at the facility and serves as a material to construct educational practices.

Knowing what has to be done at the facility shall be the priority

[Image CAPTION] DALLE-3 Model

Implementing such philosophical engineering requires infrastructural and managerial solutions. **Special Biotech Zone** (SBZ) offers a unique space for the Industry and Academia to collaborate

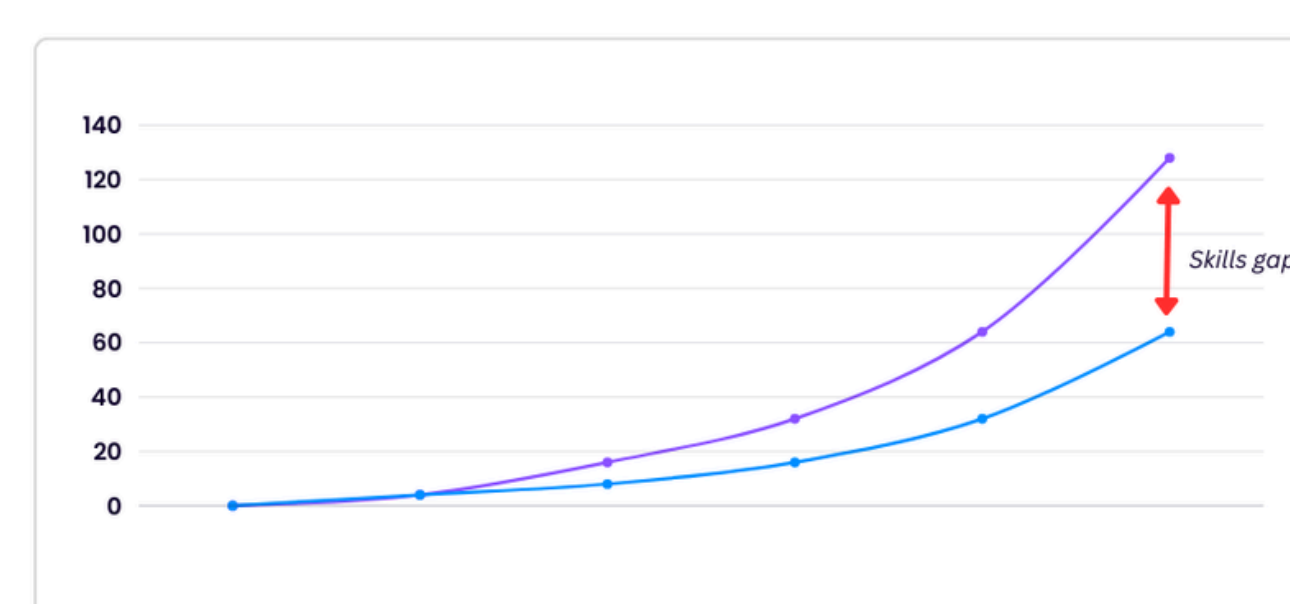
SBZ can also be thought of as a platform entity, offering liaison for biotech production

We get all the process need from the facility directly — this is ensured by the **Process Lake**. This set-up gives us the opportunity not to lag behind the technological progress, but integrate into its gears



SPECIAL BIOTECH ZONE (SBZ)

Skills Supply & Demand



● Workforce skills ● Industry needs

CONCLUSION

To truly close the growing skills gap in biomanufacturing, we should **crack the internal code of the today's biomanufacturing mode**.

It turns out, that this code has the essence of **process philosophy** and **flat ontologies**, and we have to tailor our instructional design to these paradigms to truly excel in workforce development

1. Vetushinsky, A. (2018). In the Name of Matter: Critical and Metaphysical Research. Hyle Press.
2. Regev, J. (2021). Radical TJ-ing. Hyle Press.
3. Regev, J. (2015). Coincidenceology: A Short Treatise on the Method. Translit.